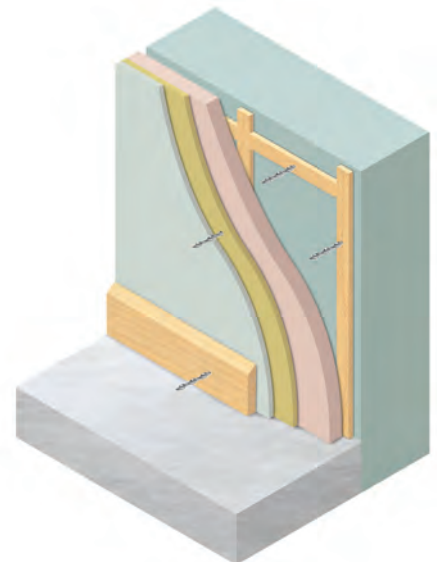
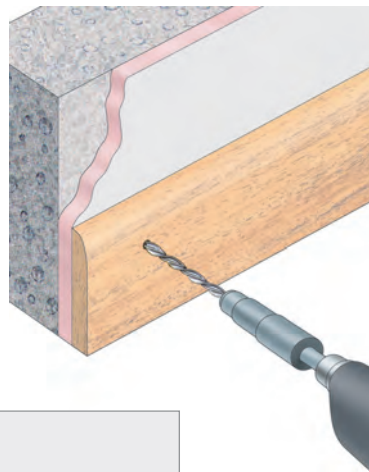


TurboFast

Versatile headless fixing for securing timber or MDF to bricks, blocks and concrete

Applications

- Versatile interior or exterior fixing
- Structural or non-structural fixing
- Skirtings, dado and picture rails
- Door frames, window frames, cills
- Battens to support kitchen units, radiators, shelf brackets and plasterboard
- Battens for external cladding
- Battens for vertical tile hanging
- Fence and gate posts
- Wall plates
- Timber posts and frames to concrete floors



Features

- Great strength and high performance
- Excellent holding power
- Stainless steel or zinc plated carbon steel
- Rapid, easy hammer or power-driven installation
- Self-tapping, stress-free connection
- Not loosened by over hammering
- Avoids splitting of blocks and timbers
- Fully flush headless fixing
- No pre-drilling with blocks or timber
- No plugs or screws required
- No staining or streaking of surfaces
- Economical – fewer fixings required
- Approved by leading block manufacturers

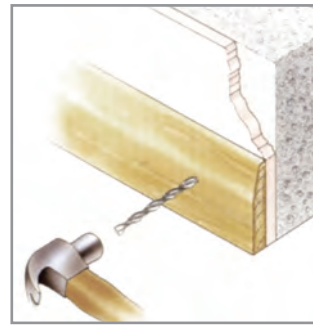


For full Product Information,
Case Studies and downloadable
Repair Details go to:

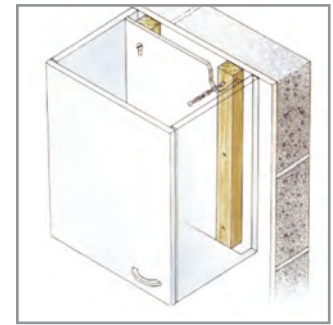
www.helifix.co.uk/products/new-build-ties-fixings/turbofast

Installation Procedures

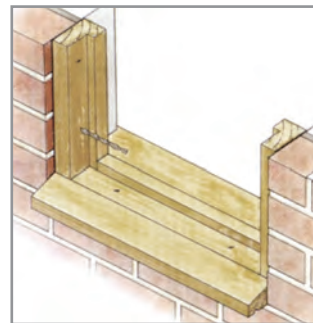
1. TurboFast fixings can be hammer or power driven into position.
2. They can be driven directly into aircrete and most light aggregate material but pilot holes must be drilled into hard masonry including brick, stone and concrete.
3. They can be driven directly through softwood and MDF but a small pilot hole may be necessary through hardwood and thicker softwood.
4. Where required, e.g. skirting boards prior to decoration, TurboFasts may be countersunk using a conventional nail punch.
5. For a sound fix, timber should not be less than 19mm thick.
6. TurboFasts have good edge distance characteristics with little tendency to split timber. In line with normal nailing practice, fixings should be kept away from edges and inserted not less than 30mm from ends.
7. In line with good carpentry practice, it is recommended that the fixings are never more than 600mm apart.



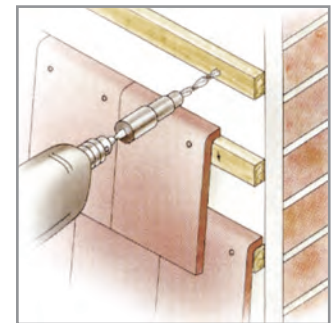
Fixing skirtings, rails and trims to blocks through plasterboard or insulation



Fixing battens to blocks to support kitchen cupboards



Fixing window and door frames to bricks and blocks



Fixing battens to bricks or blocks to support vertical tiling

Technical Specifications

Material:	Austenitic stainless steel Grade 304 (1.4301) or 316 (1.4401) Zinc plated carbon steel
Diameter:	6mm and 8mm
Length:	From 60mm upwards in 10mm increments

Application	Max. Spacing	Min. Substrate Penetration	Fixing Diameter	Max. Pilot Diameter
Lightweight non-structural fixing, e.g. skirtings, rails wood trims, vertical battens for dry linings	600mm	50-75mm	6 or 8mm	4 or 6mm
Door frames & linings, gateposts, vertical battens for small shelf or radiator brackets	400mm	75-100mm	8mm	6mm
Lightweight structural fixing, e.g. vertical battens to support kitchen cupboards, heavy shelving	250mm (1 fixing per 20kg of weight to be carried)	75-100mm	8mm	6mm
For external horizontal battens to support vertical tiling	Contact Helifix for details			

RECOMMENDED TOOLING	
For drilling pilot hole:	Rotary percussion 3-jaw-chuck drill
For installing TurboTie:	Hammer or Power Driver Attachment fitted to an electric hammer drill (SDS type)